

Riparian Conservation: A Landowner Guide

Livestock exclusion fencing, off-channel watering, bank stabilization and tree-planting, it's this combination of on-the-ground restoration projects and community collaboration that improves riparian conditions, water quality, and fish habitat. Private landowner participation is vital to the success of riparian conservation. Together we've conducted 74 on-the-ground projects, and protected nearly 100 kilometres of streambank and over 17,000 acres of riparian habitat.

What is a Riparian Area?

Riparian areas are the transition zones of vegetation between water bodies and the surrounding drier uplands. These areas are linked to water quality and function to:

- Reduce erosion
- Recharge the water table
- Stabilize the streambank
- Provide wildlife habitat
- Filter sediment

Riparian Management Techniques

1) Streambank Fencing

Fencing is a management tool that allows riparian areas to be managed as buffers.

Riparian pasture is a stream corridor that has controlled grazing so that the riparian vegetation can perform its normal duties. Exclusion fencing means the livestock access is prohibited from the riparian area.

Alberta Conservation Association offers funding to landowners that covers up to 75 percent of streambank fencing project costs.



2) Off-Site Watering

An alternate watering source eliminates the need for livestock to access the stream and may result in an overall improvement in herd health. Dugouts, nose pumps, gravity fed systems and portable solar-powered systems are all alternatives to watering livestock in a natural water body.

Alberta Conservation Association offers watering systems for riparian landowners to use for demonstration purposes and offers funding of 50 percent toward the purchase of systems.

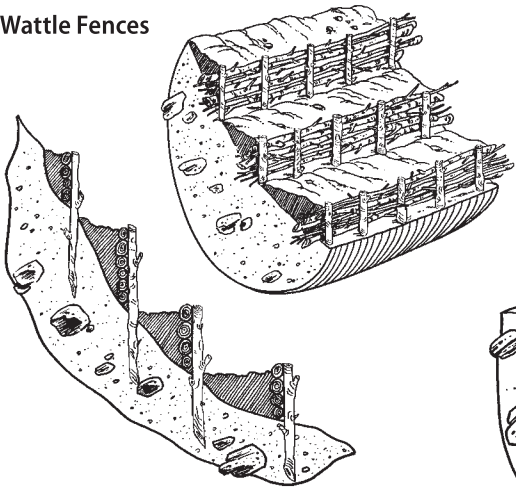


3) Bank Stabilization

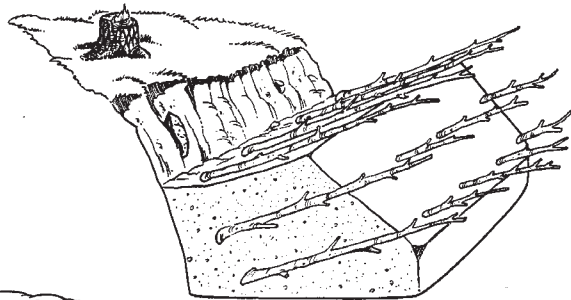
Bioengineering refers to a method of bank stabilization using only natural materials. Regeneration of tree cuttings (in the structures), produces roots that bind the stream bank together.



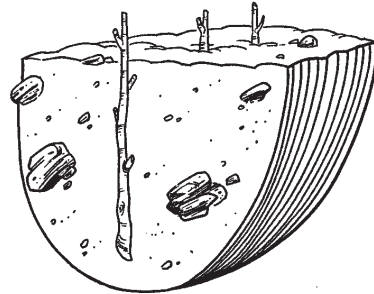
Wattle Fences



Brush Layers



Live Staking



Illustrations: Steve Milroy
© Polster Environmental Services Ltd.

For more information, contact:

John Hallett, Alberta Conservation Association
Peace River, AB

Phone: 780-624-7117

Email: john.hallett@ab-conservation.com

Jennifer Straub, Alberta Conservation Association
Peace River, AB

Phone: 780 618-4362

Email: jennifer.straub@ab-conservation.com

Formed in 1997, Alberta Conservation Association (ACA) is a not-for-profit, registered charity largely funded by Alberta's hunters and anglers through licence levies and a growing number of corporate partners. Annually, ACA directs more than \$10 million towards delivering conservation programs in Wildlife, Fisheries and Land Management.



Alberta Conservation
Association

Conserving Alberta's Wild Side

www.ab-conservation.com