



LANDOWNER HUNTER ACCESS SURVEY

2,036 Responses

60 Municipalities & Counties

Objective:

To examine the views and concerns of private landowners in Alberta on issues that may limit or prohibit public access for hunting.

This voluntary, online survey contained 68 questions and was active for 82 days (January 8, 2021 to March 31, 2021). The survey was advertised through various social media, publications, and websites of agriculture industry partners and county offices as well as rural newspapers and Alberta Conservation Association social media accounts. Results represent survey respondents who completed the online survey and due to bias may not hold true for the general population of landowners across the province. This survey was focused on private land and did not include questions about leased public land.

We are grateful for the landowners that took the time to complete the survey.

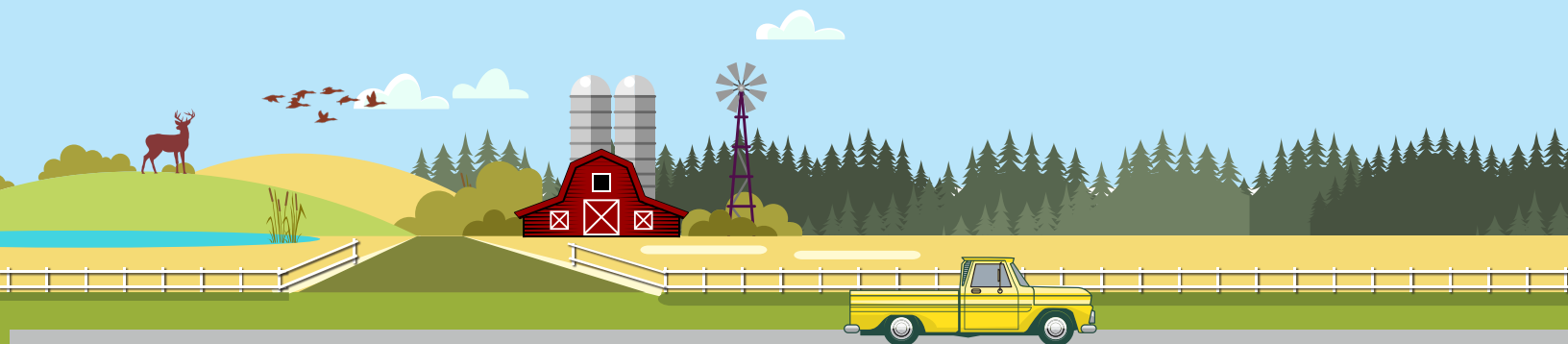
Please visit <https://www.ab-conservation.com> for additional survey information.

Created in partnership with:

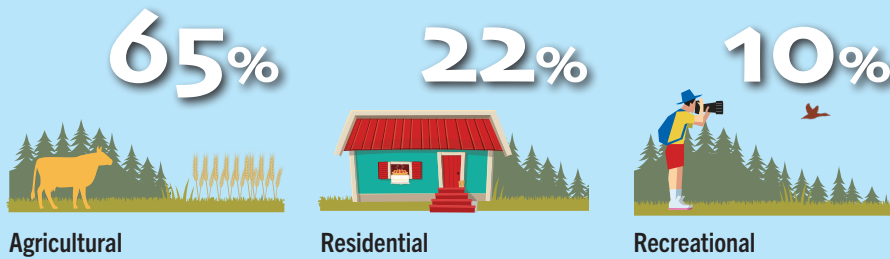
Alberta Beef Producers
Alberta Crop Sector Working Group
Alberta Professional Outfitters Society
Alberta Wheat and Barley Commissions
University of Alberta
University of Waterloo
Western Stock Growers' Association

Funding was provided by:

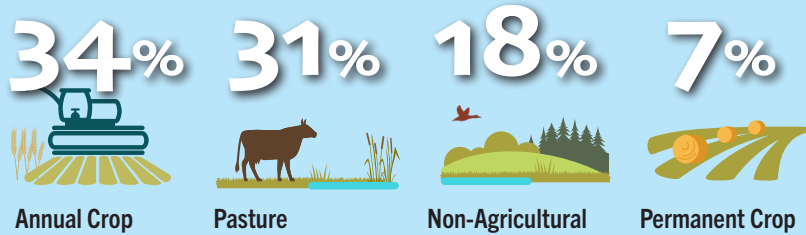
Alberta Professional Outfitters Society Wildlife Management Fund
Alberta Fish & Game Association-Minister's Special Licence Program
Cabela's | Bass Pro Shops



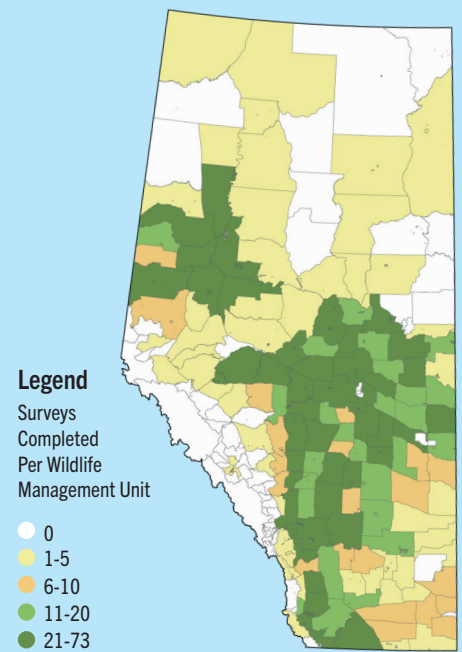
Type of Property



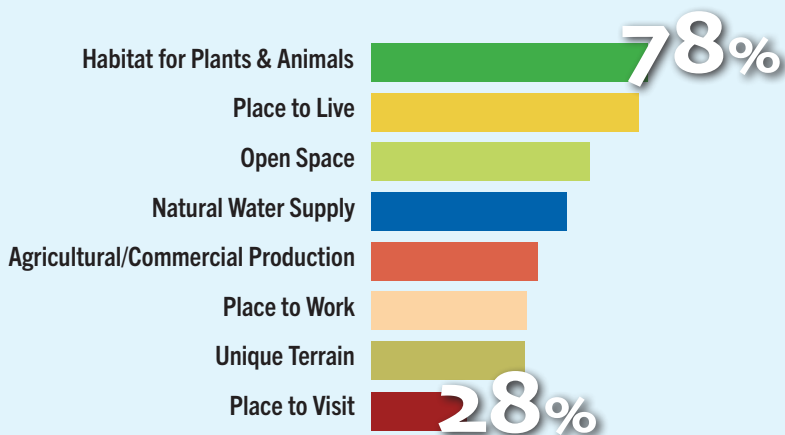
Primary Use of Land



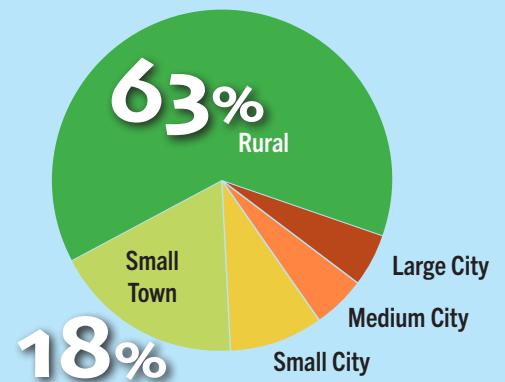
Respondent Locations



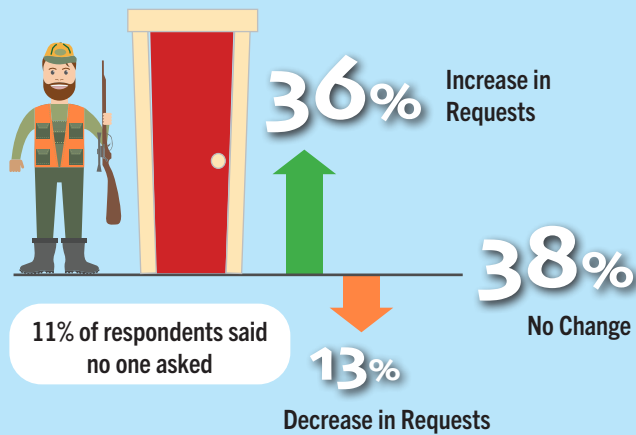
How Landowners Value Their Property



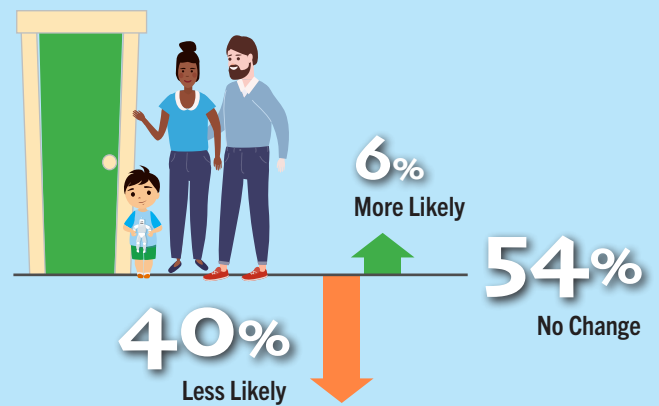
Where Respondents Grew Up



Hunters Asking for Permission



Landowners Granting Permission



Requests for Access VS What Landowners Can Accommodate

15%
Could Be More

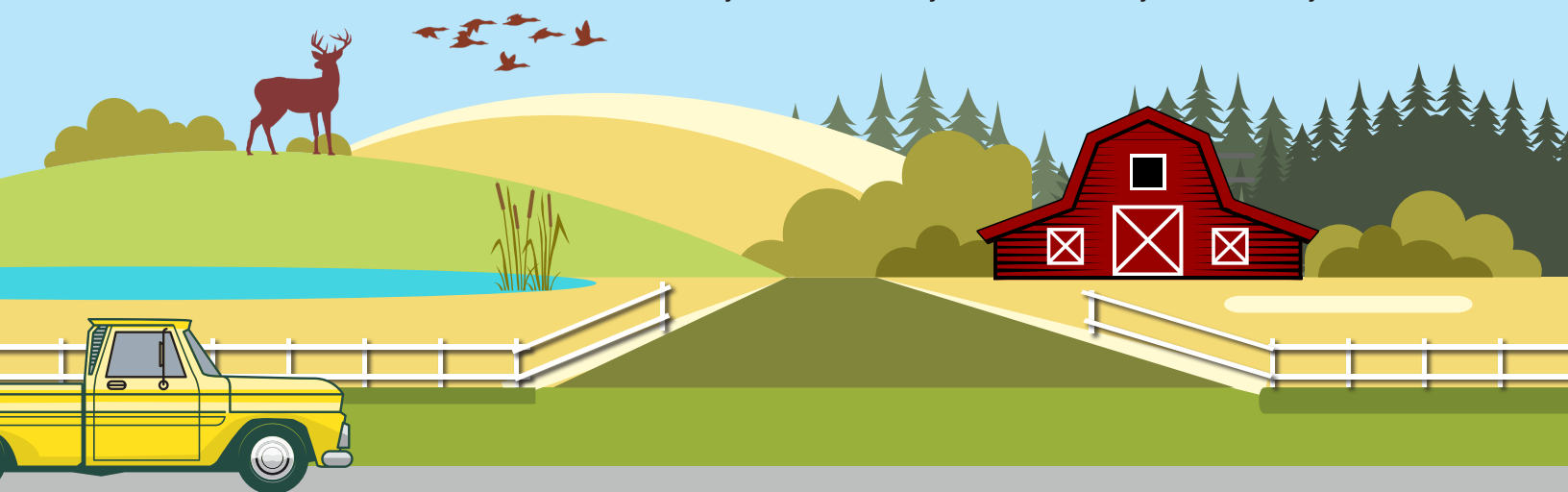
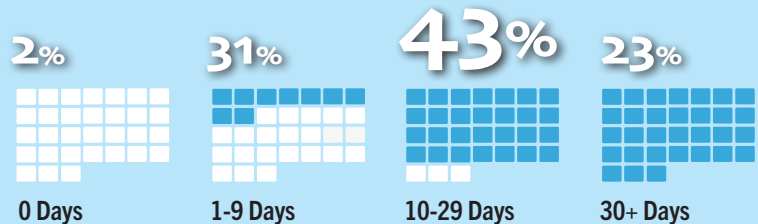
41%
Too Many

44%
Just Right

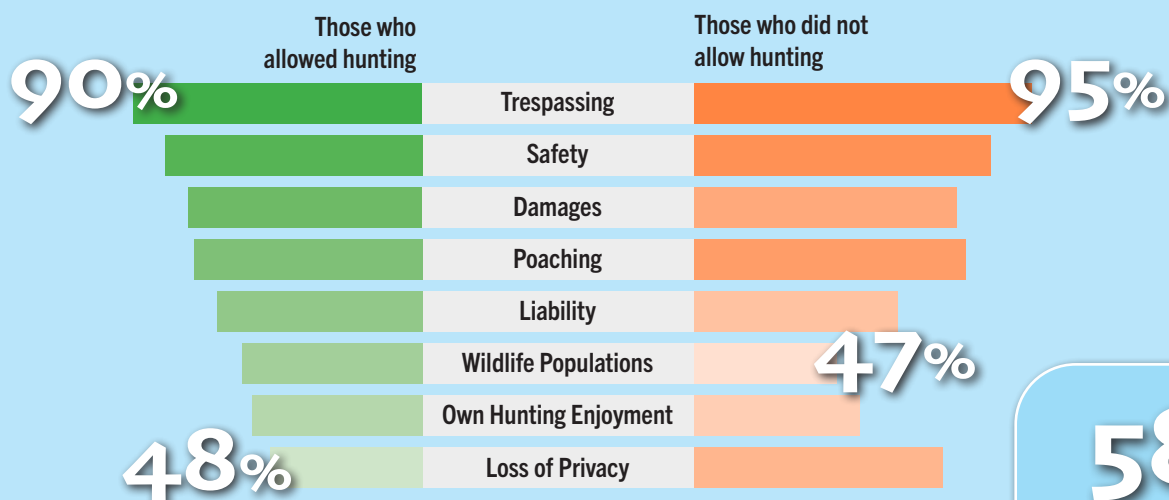
Number of Hunters on an Average Day



Number of Days Hunters are on the Property



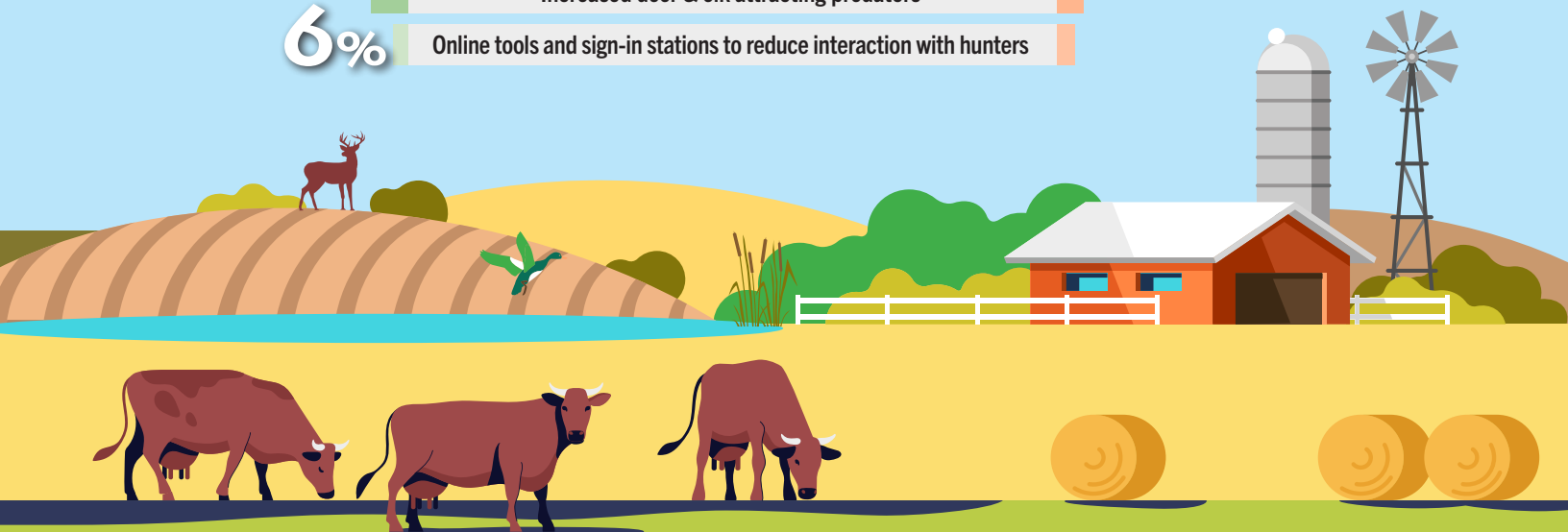
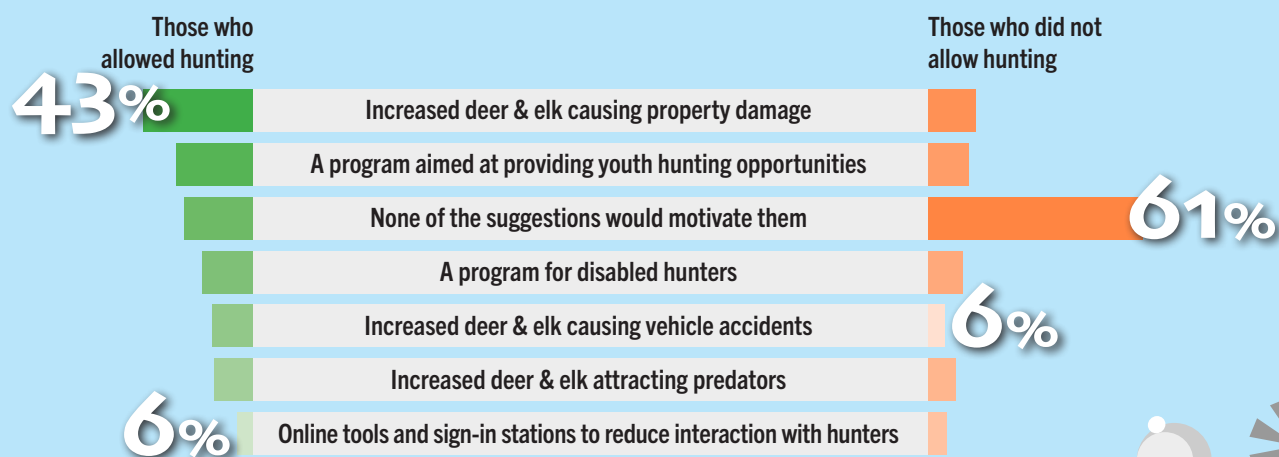
Hunting Access Concerns



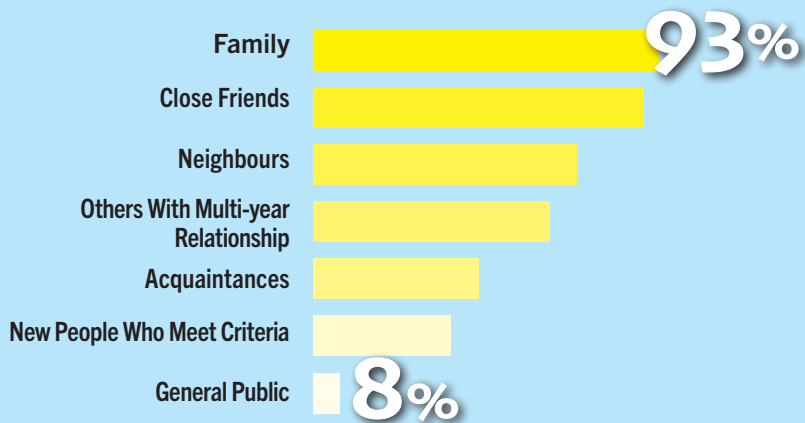
58%

of respondents who don't allow hunting did provide access in the past.

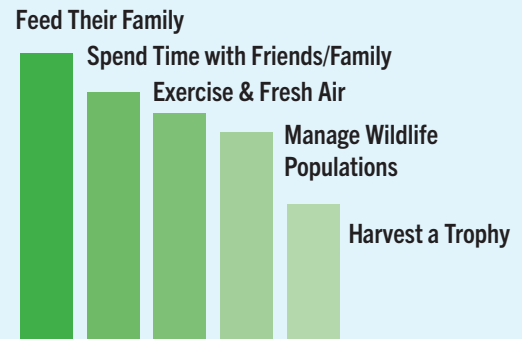
Motivations to Allow More Hunter Access



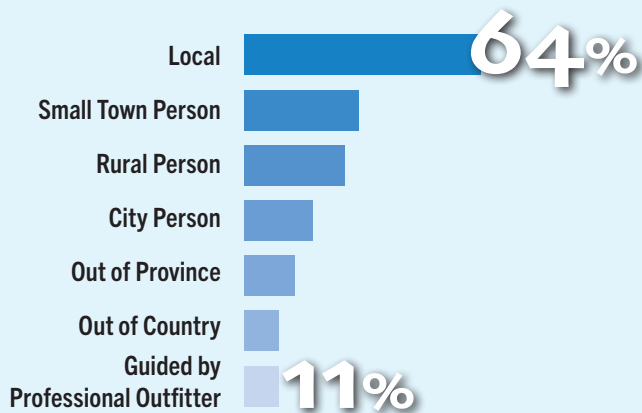
Landowners are Most Willing to Give Access to:



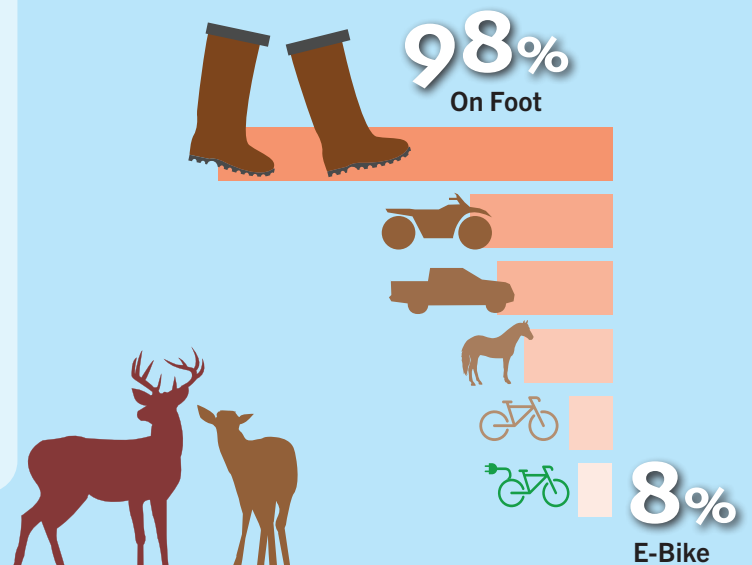
Why Hunt? Landowners and Hunters Agree.



Of New People Who Meet Criteria, the Following are More Likely to Get Access:



Preferred Methods of Access



Does Sex or Species Hunted Influence Permission

