

Angling Opportunities

North Raven River and Raven River

With the help of Alberta Conservation Association (ACA), conservation-minded landowners have worked to improve riparian habitat, which has benefited local fish and wildlife populations. Projects included a variety of improvements such as off-site watering systems, wildlife-friendly exclusion fencing, bioengineering projects, and tree planting. Participating landowners sign habitat lease agreements and have agreed to provide reasonable public access to the habitat lands being protected to increase angling opportunities in the area. These lands are different from ACA conservation sites, where no contact is needed for use. Please refer to the *Alberta Discover Guide* for access conditions or restrictions on conservation sites.

North Raven River and Raven River are priority trout streams where ACA has been focusing riparian conservation efforts. Dating back to the Government of Alberta's Buck for Wildlife Program, significant stretches of these streams had been fenced and protected resulting in healthier fish habitat, improved fish populations, and world-class angling opportunities for brown trout. To help the public access these riparian corridors for their enjoyment, ACA has provided contact requirements requested by landowners and created the included maps. The maps highlight locations where riparian projects and conservation sites are located and their access points. Please keep in mind that most of these lands are privately owned. Landowners reserve the right to refuse access to any person for any reason at any time. All users accessing these properties do so at their own risk.



For more information about conservation sites, download the *Alberta Discover Guide* App at www.albertadiscoverguide.com



Please remember to:

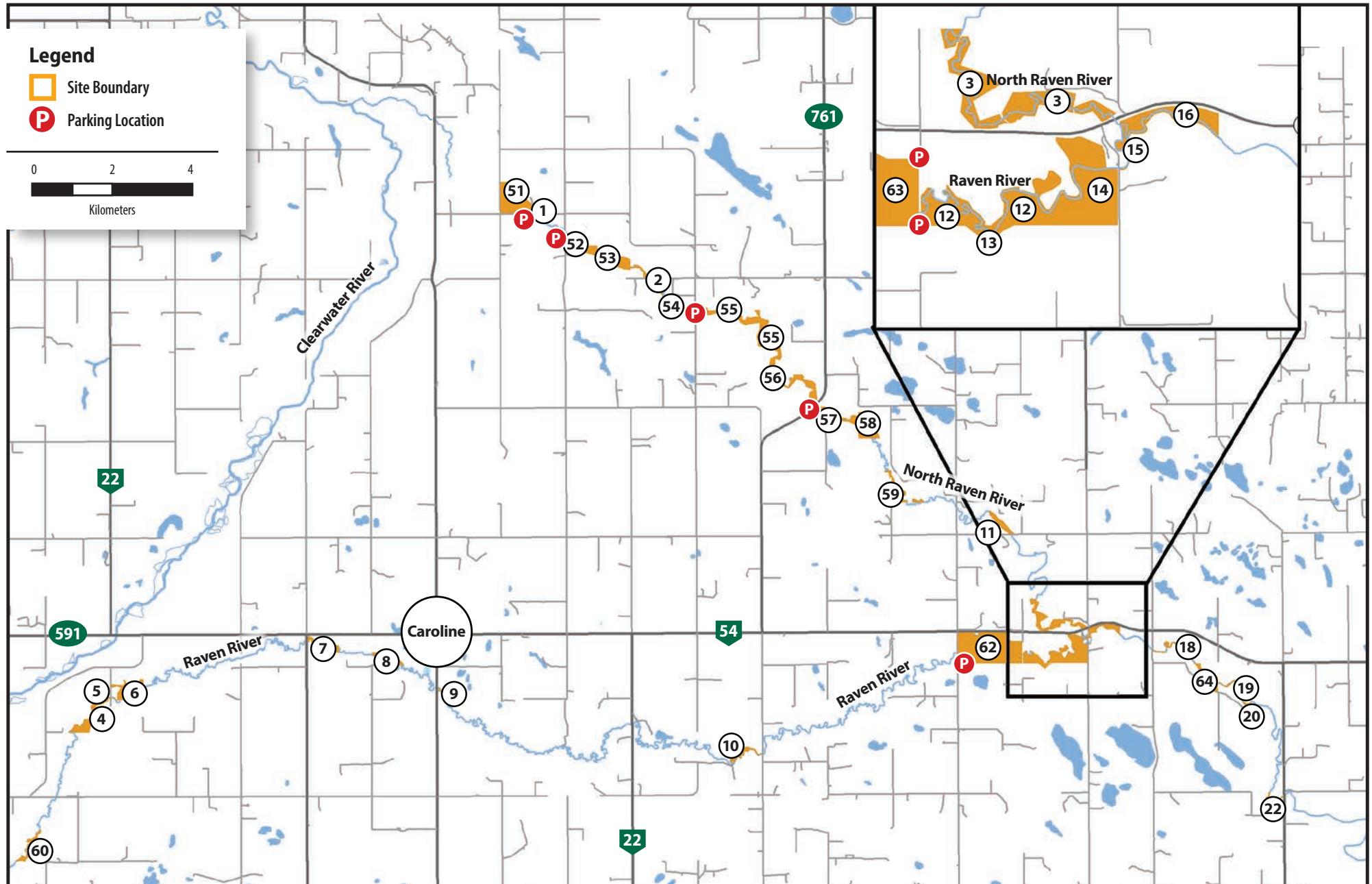
- Stay within the fenced off riparian corridor indicated on the included maps. If you wish to go outside the fenced habitat lands, please use respect and contact the respective landowner first.
- Obey all signage, do not block gates, and park safely. Leave all gates as you found them. Many landowners also own livestock so please be aware.
- Follow all Alberta fishing regulations.
- Pack out what you pack in.



All corridors are foot access only, day use only, and no open fires are allowed.

These maps are intended to provide access for fishing only. Please use respect.

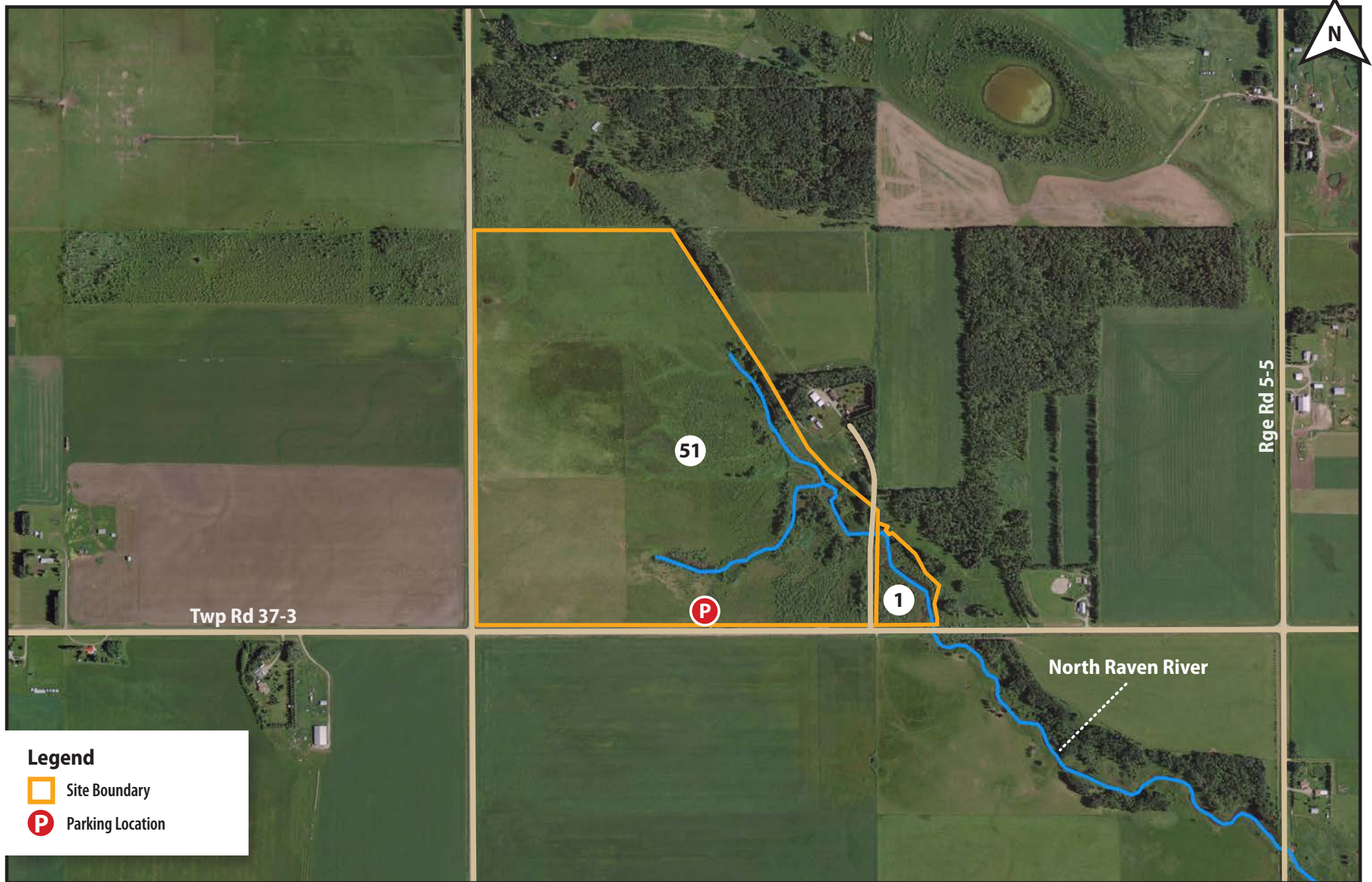
Angling Opportunities for North Raven River and Raven River



Please refer to the table below for access conditions to riparian corridors

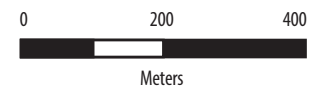
River	Site	Site Name	LLD	Landowner	Access Conditions	Other Information
North Raven River	51	Leavitt Conservation Site (E3-44)	SW-19-037-05-W5M	ACA	No contact required	
North Raven River	1	Veldkamp Riparian Site	SE-19-037-05-W5M	J Veldkamp	No contact required	
North Raven River	52	Stainbrook Springs Conservation Site (E3-58)	NW-17-037-05-W5M	ACA	No contact required	
North Raven River	53	North Raven River Conservation Site (E3-56)	S-17-037-05-W5M, SW-16-037-05-W5M	Crown Land (Managed by ACA)	No contact required	
North Raven River	2	Birovljev Riparian Site	NW-09-037-05-W5M	N Birovljev	No contact required	
North Raven River	54	North Raven River Conservation Site (E3-56)	E-09-037-05-W5M	Crown Land (Managed by ACA)	No contact required	
North Raven River	55	North Raven River Conservation Site (E3-56)	10-037-05-W5M, SW-11-037-05-W5M	Crown Land (Managed by ACA)	No contact required	
North Raven River	56	North Raven River Conservation Site (E3-56)	W-02-037-05-W5M, SE-02-037-05-W5M	Crown Land (Managed by ACA)	No contact required	
North Raven River	57	Coulson Conservation Site (E3-168)	NE-35-036-05-W5M	ACA	No contact required	
North Raven River	58	North Raven River Conservation Site (E3-56)	N-36-036-05-W5M	Crown Land (Managed by ACA)	No contact required	
North Raven River	59	North Raven River Conservation Site (E3-56)	NE-25-036-05-W5M, NW-30-036-04-W5M	Crown Land (Managed by ACA)	No contact required	
North Raven River	3	Doll-1 Riparian Site	N-16-036-04-W5M	D & J Doll	No contact required	
Raven River	60	Raven River Conservation Site (E3-89)	SE-35-035-07-W5M	Crown Land (Managed by ACA)	No contact required	
Raven River	4	Pengelly K Riparian Site	SE-12-036-07-W5M	K Pengelly	403-844-6606	Access via Raven River.
Raven River	5	Pengelly D Riparian Site	NE-12-036-07-W5M	D Pengelly	No contact required	
Raven River	6	McGlone Riparian Site	NW-07-036-06-W5M	R McGlone	403-722-3808	
Raven River	7	MacCharles Riparian Site	SW-15-036-06-W5M	B & B MacCharles	No contact required	
Raven River	8	Shaw Riparian Site	SW-14-036-06-W5M	B & H Shaw	403-845-0284	Access from Hwy 54, south on Rge Rd 6-2, follow road allowance to fence.
Raven River	9	Follis Riparian Site	NW-12-036-06-W5M	J & G Follis	No contact required	
Raven River	10	Godwin Riparian Site	NE-03-036-05-W5M	H & M Godwin	403-722-2483	
Raven River	62	Porter Conservation Site (E3-170)	SW-17-036-04-W5M	ACA	No contact required	
Raven River	63	Drake Conservation Site (E3-165)	SE-17-036-04-W5M	ACA	No contact required	
Raven River	12	McArthur Riparian Site	SW-16-036-04-W5M	F McArthur	No contact required	Access via Rge Rd 44, along road allowance.
Raven River	13	Bertagnolli Riparian Site	NW-09-036-04-W5M	M & A Bertagnolli	No contact required	Access via Raven River.
Raven River	14	Doll-2 Riparian Site	SE-16-036-04-W5M	D & J Doll	No contact required	
Raven River	15	Erickson Riparian Site	SW-15-036-04-W5M	B Erickson	No contact required	The corridor is on the south side of the river.
Raven River	16	Stannard Riparian Site	NW-15-036-04-W5M	J & D Stannard	403-505-3298	The corridor is on the north side of the river.
Raven River	18	Stoyberg Farms Riparian Site	S-14-036-04-W5M	Stoyberg Farms	No contact required	
Raven River	64	Raven River Conservation Site (E3-89)	NE-11-036-04-W5M	Crown Land (Managed by ACA)	No contact required	
Raven River	19	Lamport Riparian Site	NW-12-036-04-W5M	W Lamport	403-226-0345, 403-828-8725	Access via Rge Rd 41, along road allowance.
Raven River	20	Butler Riparian Site	SW-12-036-04-W5M	D & A Butler	No contact required	Access via Raven River.
Raven River	22	Smith Riparian Site	NE-36-036-04-W5M	B & C Smith	403-396-5647, 403-877-0409	
North Raven River	11	Zukowski Riparian Site	SE-29-036-04-W5M	Zukowski TBC	No contact required	Access from the south via Twp Rd 36-4

For more information about conservation sites, download the *Alberta Discover Guide* App at www.albertadiscoverguide.com



Riparian Corridor Access Conditions

River	Site	Site Name	LLD	Access Conditions
North Raven River	51	Leavitt Conservation Site (E3-44)	SW-19-037-05-W5M	No contact required
North Raven River	1	Veldkamp Riparian Site	SE-19-037-05-W5M	No contact required





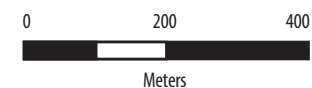
Legend

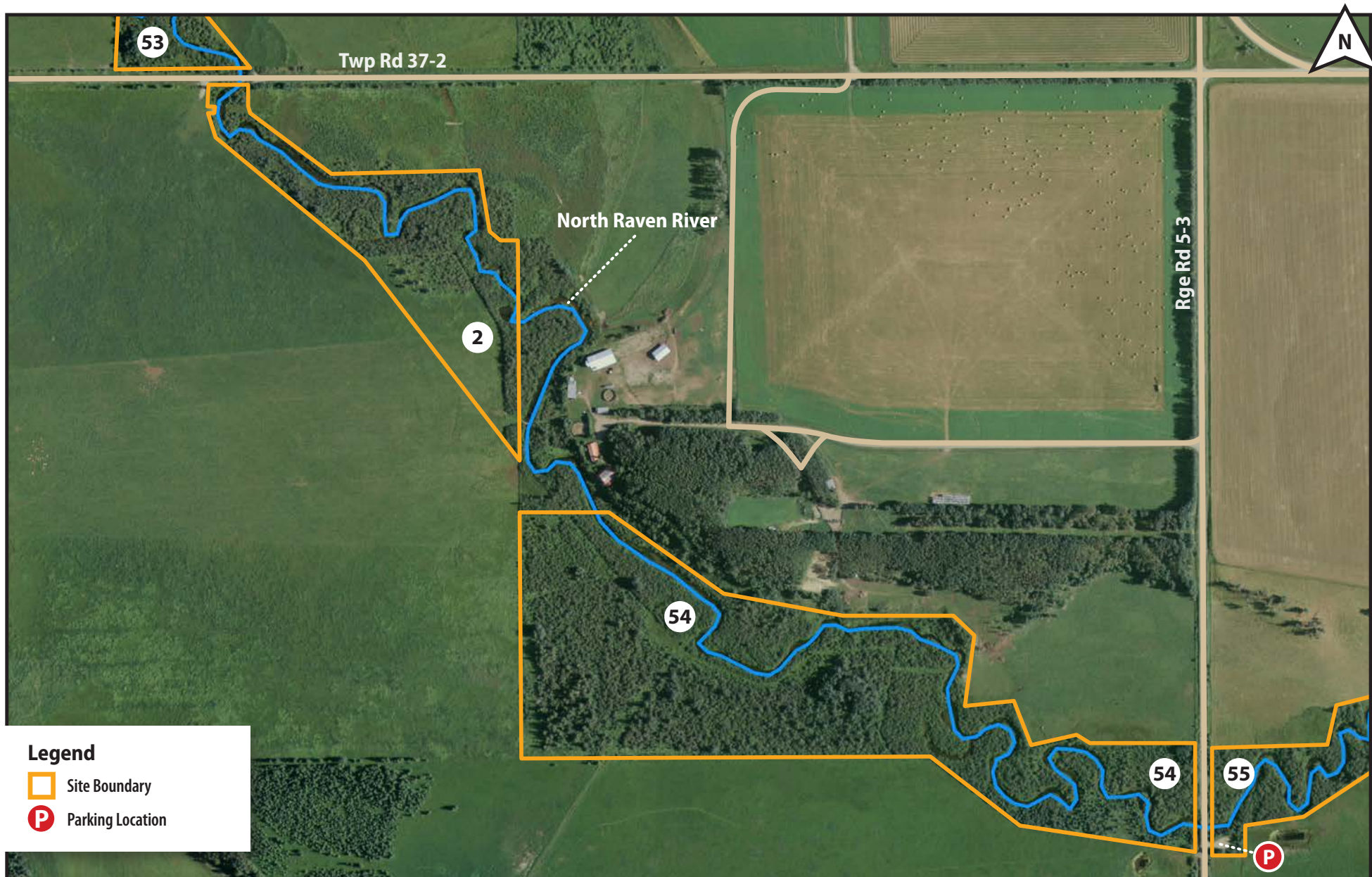
- Site Boundary
- P Parking Location



Riparian Corridor Access Conditions

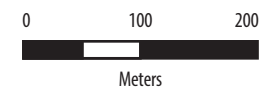
River	Site	Site Name	LLD	Access Conditions
North Raven River	52	Stainbrook Springs Conservation Site (E3-58)	NW-17-037-05-W5M	No contact required
North Raven River	53	North Raven River Conservation Site (E3-56)	S-17-037-05-W5M, SW-16-037-05-W5M	No contact required
North Raven River	2	Birovljev Riparian Site	NW-09-037-05-W5M	No contact required





Riparian Corridor Access Conditions

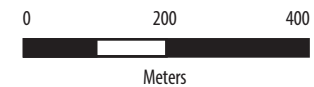
River	Site	Site Name	LLD	Access Conditions
Raven River	53	North Raven River Conservation Site (E3-56)	S-17-037-05-W5M, SW-16-037-05-W5M	No contact required
Raven River	2	Birovljev Riparian Site	NW-09-037-05-W5M	No contact required
Raven River	54	North Raven River Conservation Site (E3-56)	E-09-037-05-W5M	No contact required
Raven River	55	North Raven River Conservation Site (E3-56)	10-037-05 W5M, SW-11-037-05-W5M	No contact required

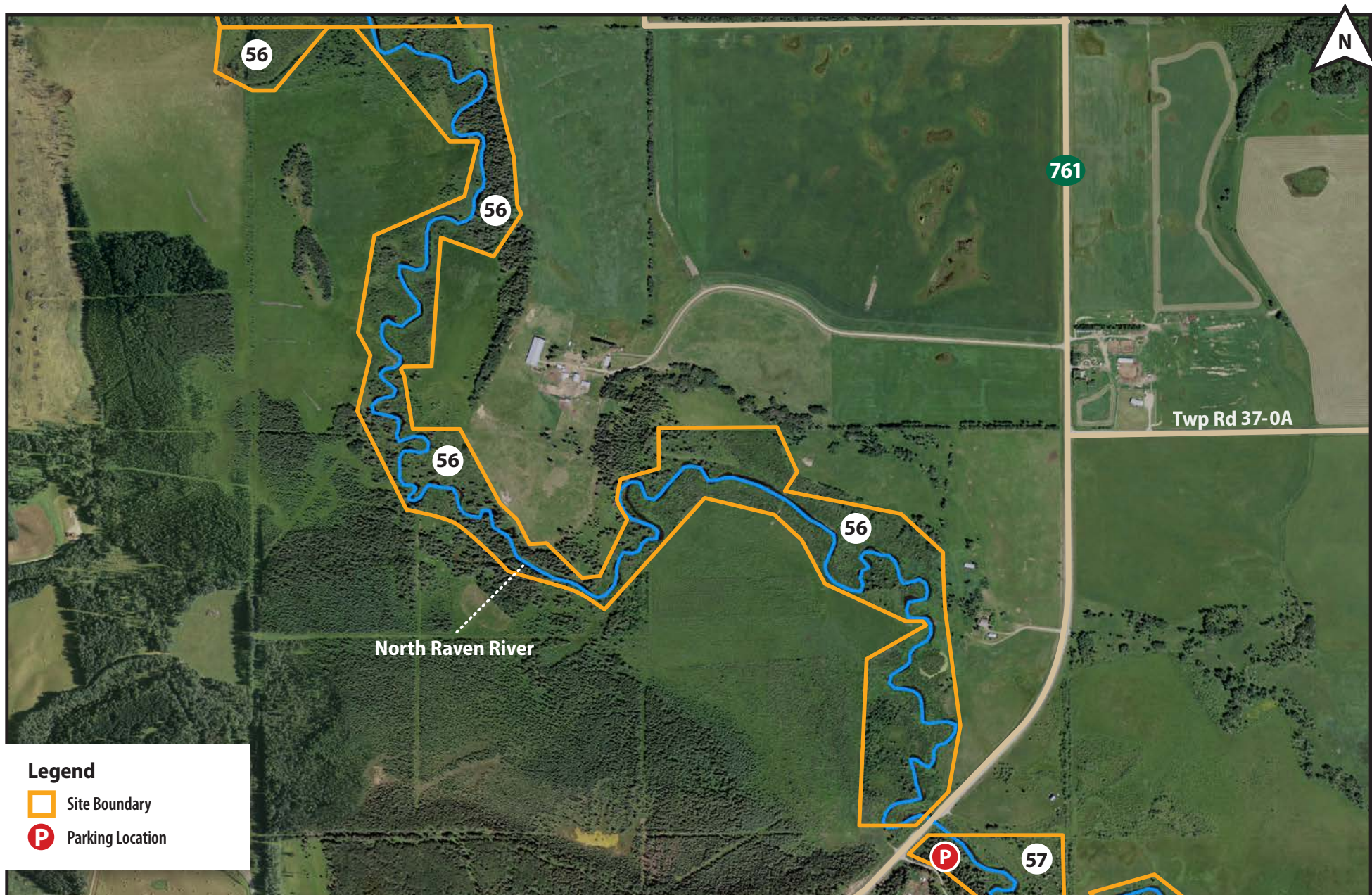




Riparian Corridor Access Conditions

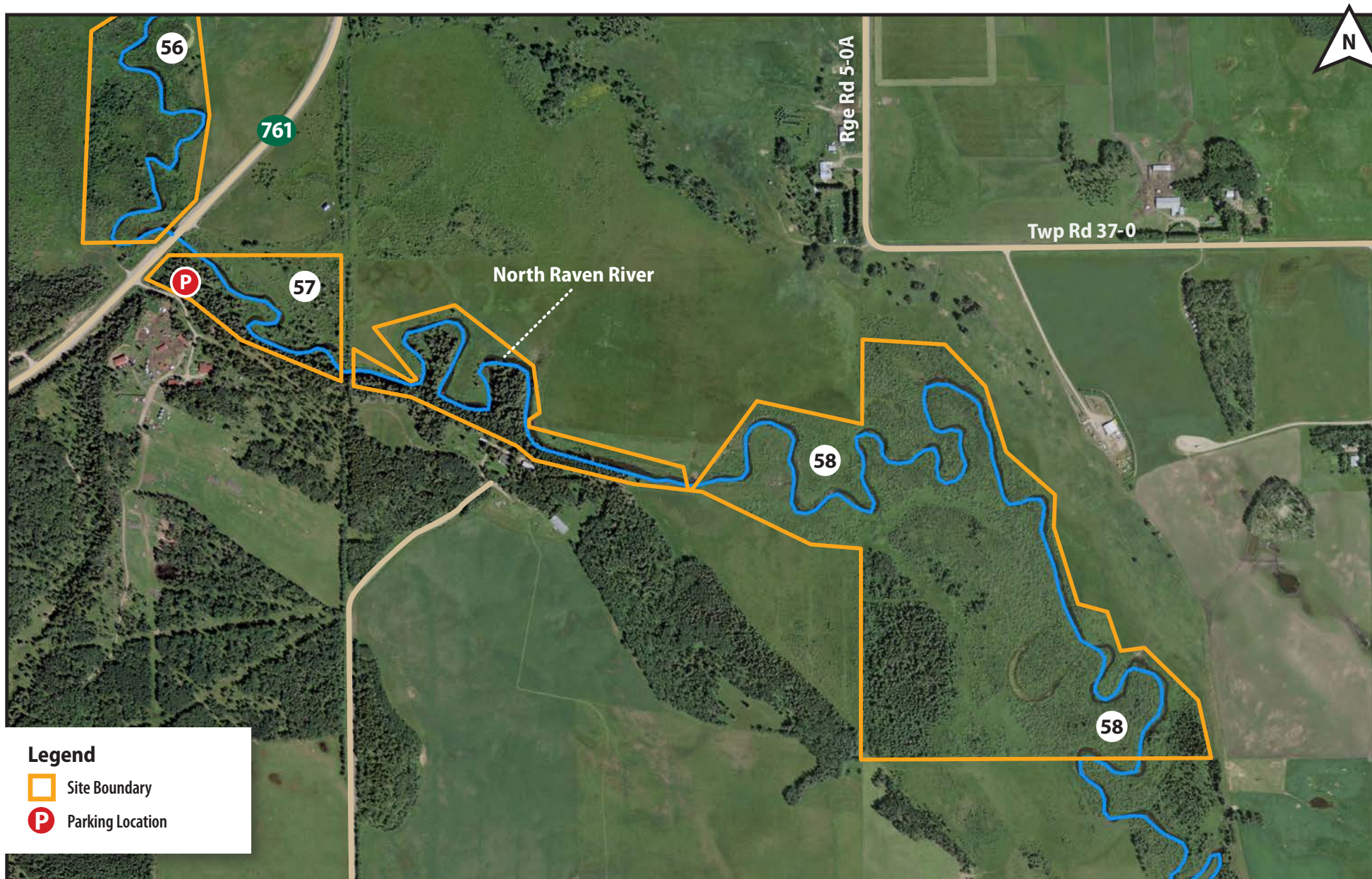
River	Site	Site Name	LLD	Access Conditions
North Raven River	54	North Raven River Conservation Site (E3-56)	E-09-037-05-W5M	No contact required
North Raven River	55	North Raven River Conservation Site (E3-56)	10-037-05-W5M, SW-11-037-05-W5M	No contact required
North Raven River	56	North Raven River Conservation Site (E3-56)	W-02-037-05-W5M, SE-02-037-05-W5M	No contact required





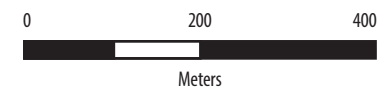
Riparian Corridor Access Conditions

River	Site	Site Name	LLD	Access Conditions
North Raven River	56	North Raven River Conservation Site (E3-56)	W-02-037-05-W5M, SE-02-037-05-W5M	No contact required
North Raven River	57	Coulson Conservation Site (E3-168)	NE-35-036-05-W5M	No contact required



Riparian Corridor Access Conditions

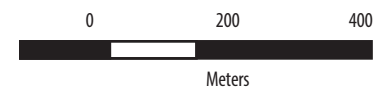
River	Site	Site Name	LLD	Access Conditions
North Raven River	56	North Raven River Conservation Site (E3-56)	W-02-037-05-W5M, SE-02-037-05-W5M	No contact required
North Raven River	57	Coulson Conservation Site (E3-168)	NE-35-036-05-W5M	No contact required
North Raven River	58	North Raven River Conservation Site (E3-56)	N-36-036-05-W5M	No contact required

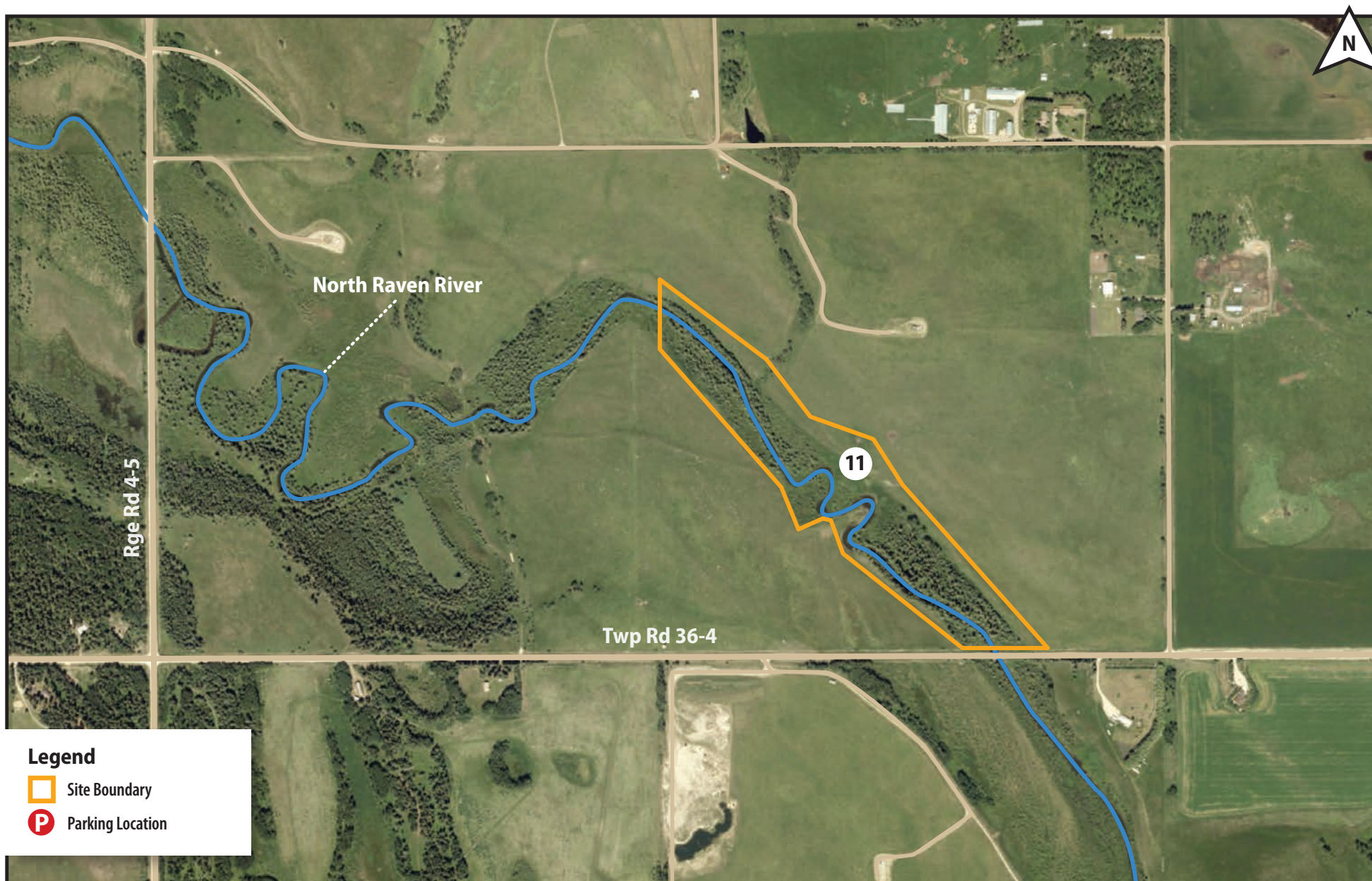





Riparian Corridor Access Conditions

River	Site	Site Name	LLD	Access Conditions
North Raven River	59	North Raven River Conservation Site (E3-56)	NE-25-036-05-W5M, NW-30-036-04-W5M	No contact required





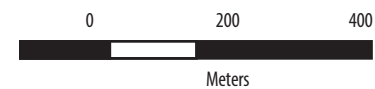
Legend

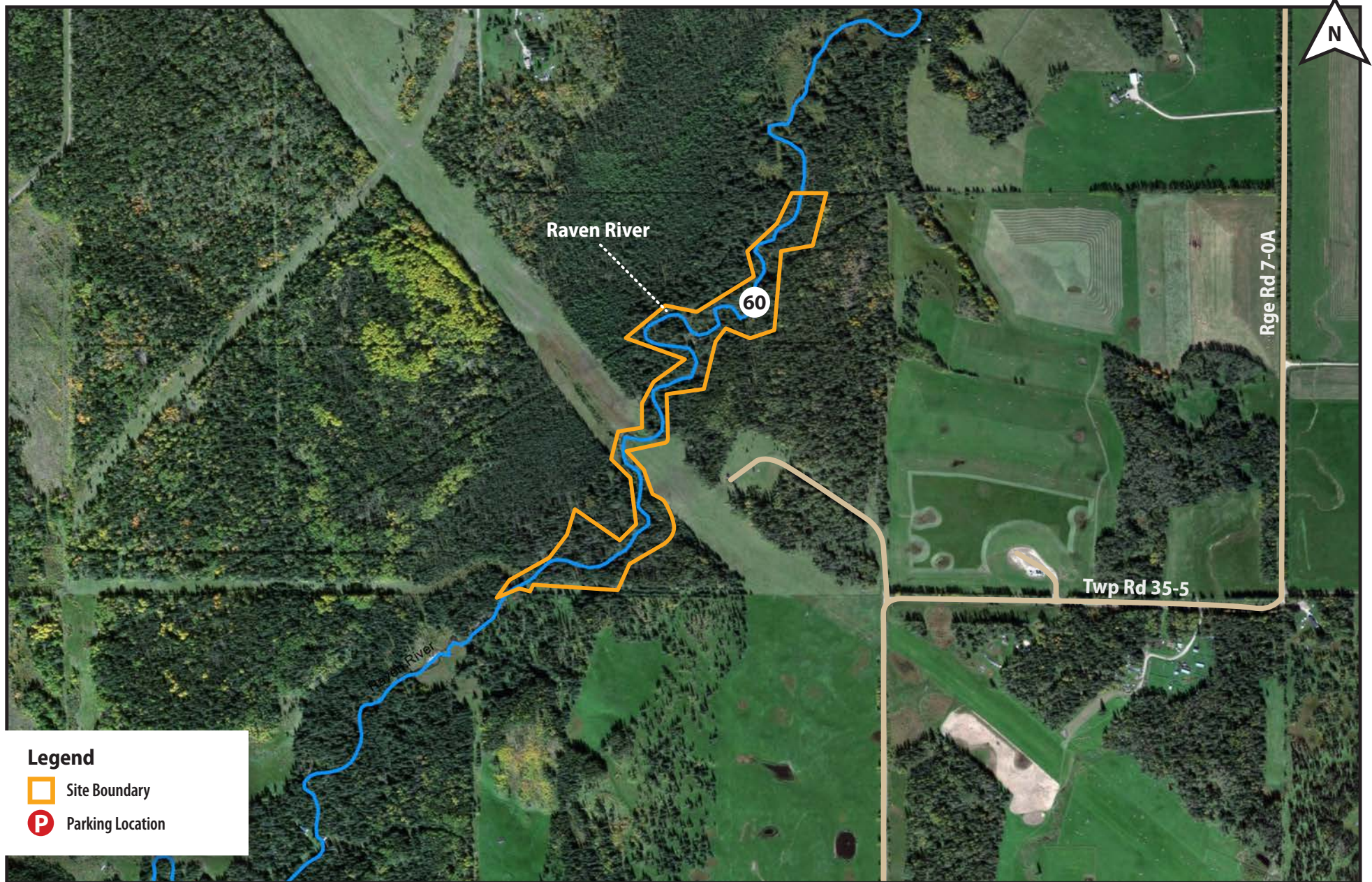
-  Site Boundary
-  Parking Location



Riparian Corridor Access Conditions

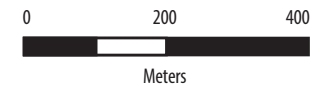
River	Site	Site Name	LLD	Access Conditions
North Raven River	11	Zukowski Riparian Site	SE-29-036-04 W5M	No contact required

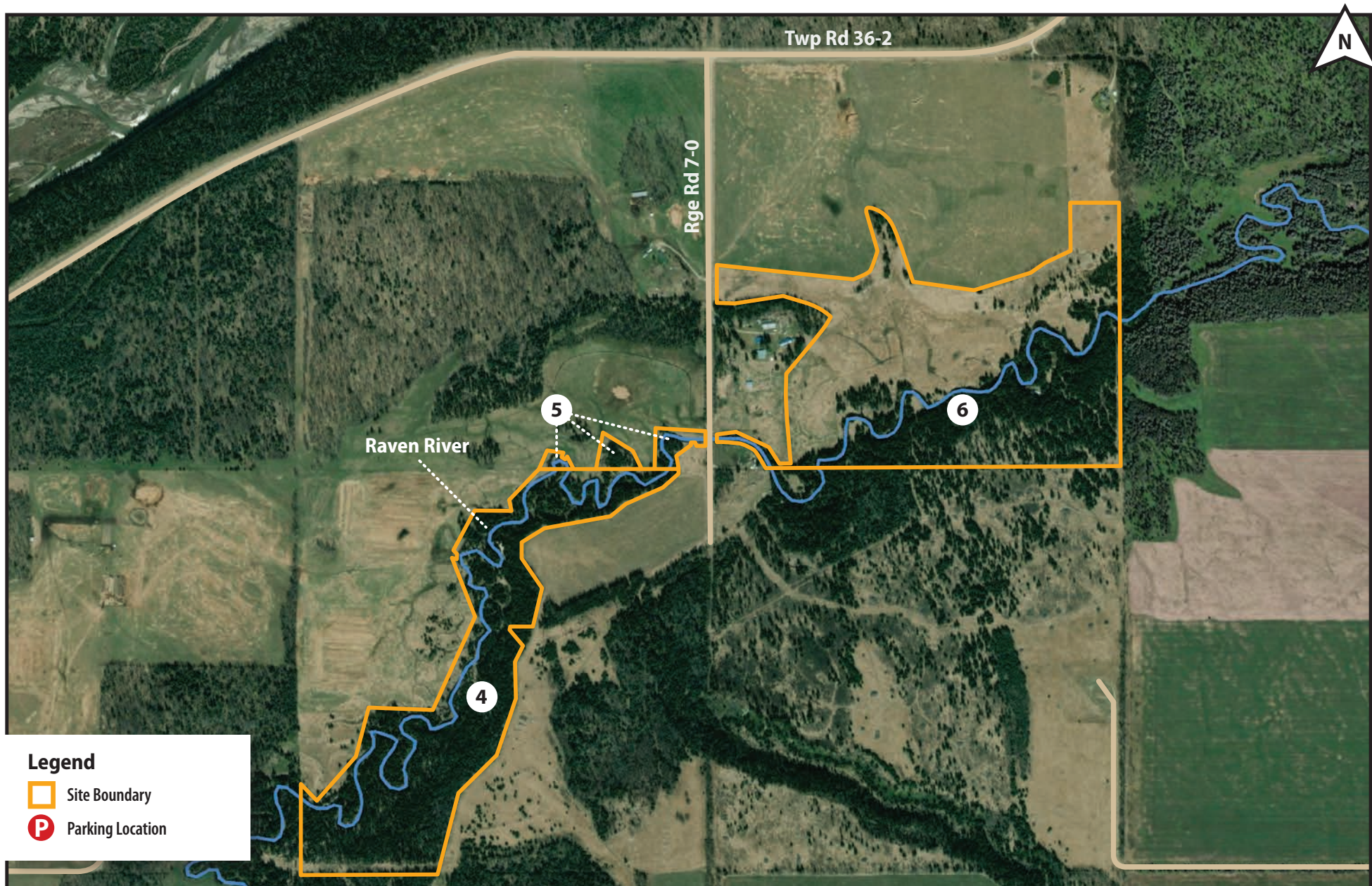




Riparian Corridor Access Conditions

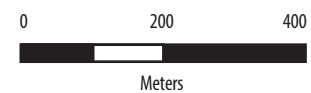
River	Site	Site Name	LLD	Access Conditions
Raven River	60	Raven River Conservation Site (E3-89)	SE-35-035-07-W5M	No contact required

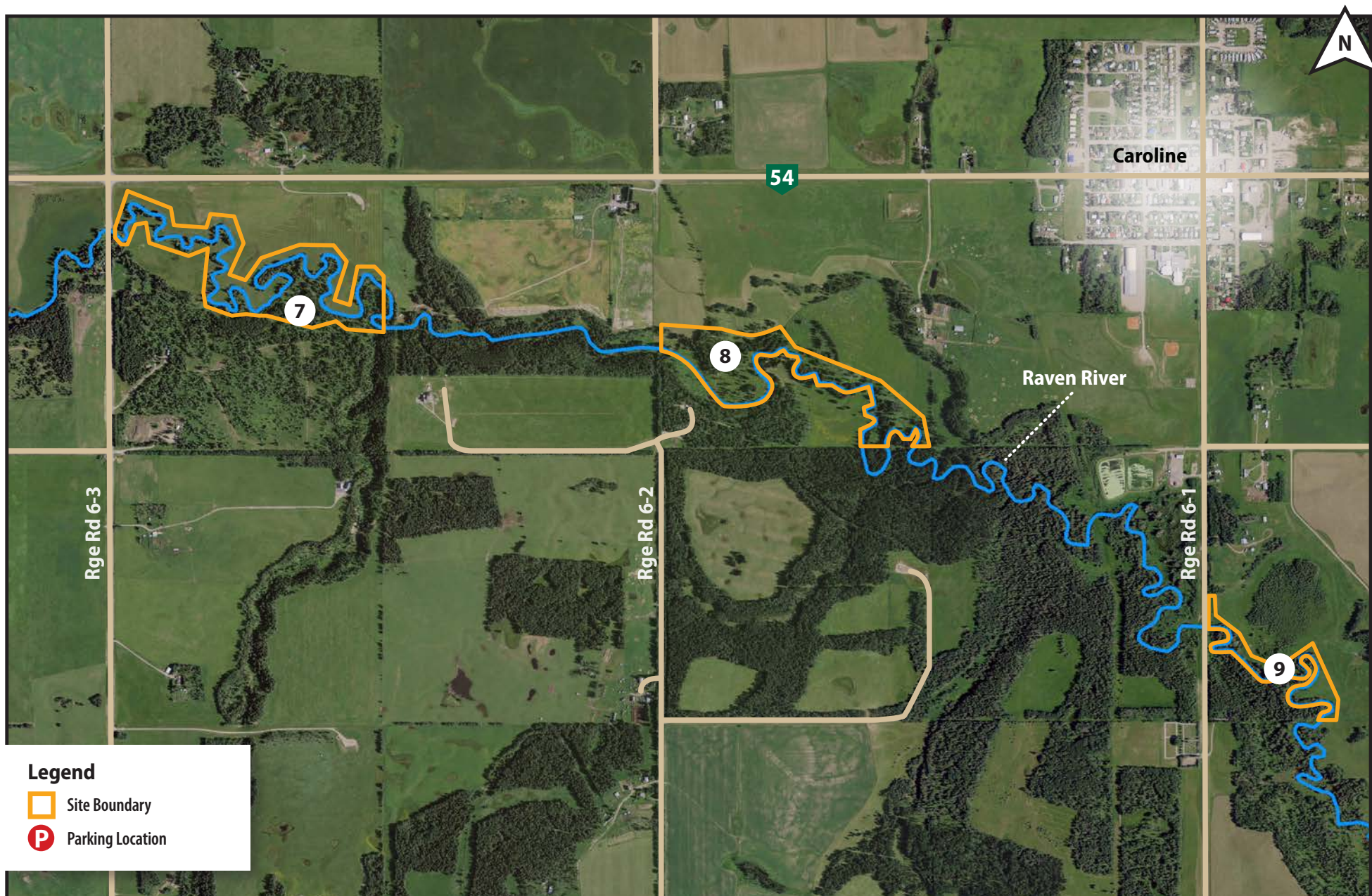




Riparian Corridor Access Conditions

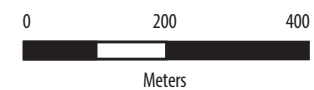
River	Site	Site Name	LLD	Access Conditions
Raven River	4	Pengelly K Riparian Site	SE-12-036-07-W5M	403-844-6606
Raven River	5	Pengelly D Riparian Site	NE-12-036-07-W5M	No contact required
Raven River	6	McGlone Riparian Site	NW-07-036-06-W5M	403-722-3808

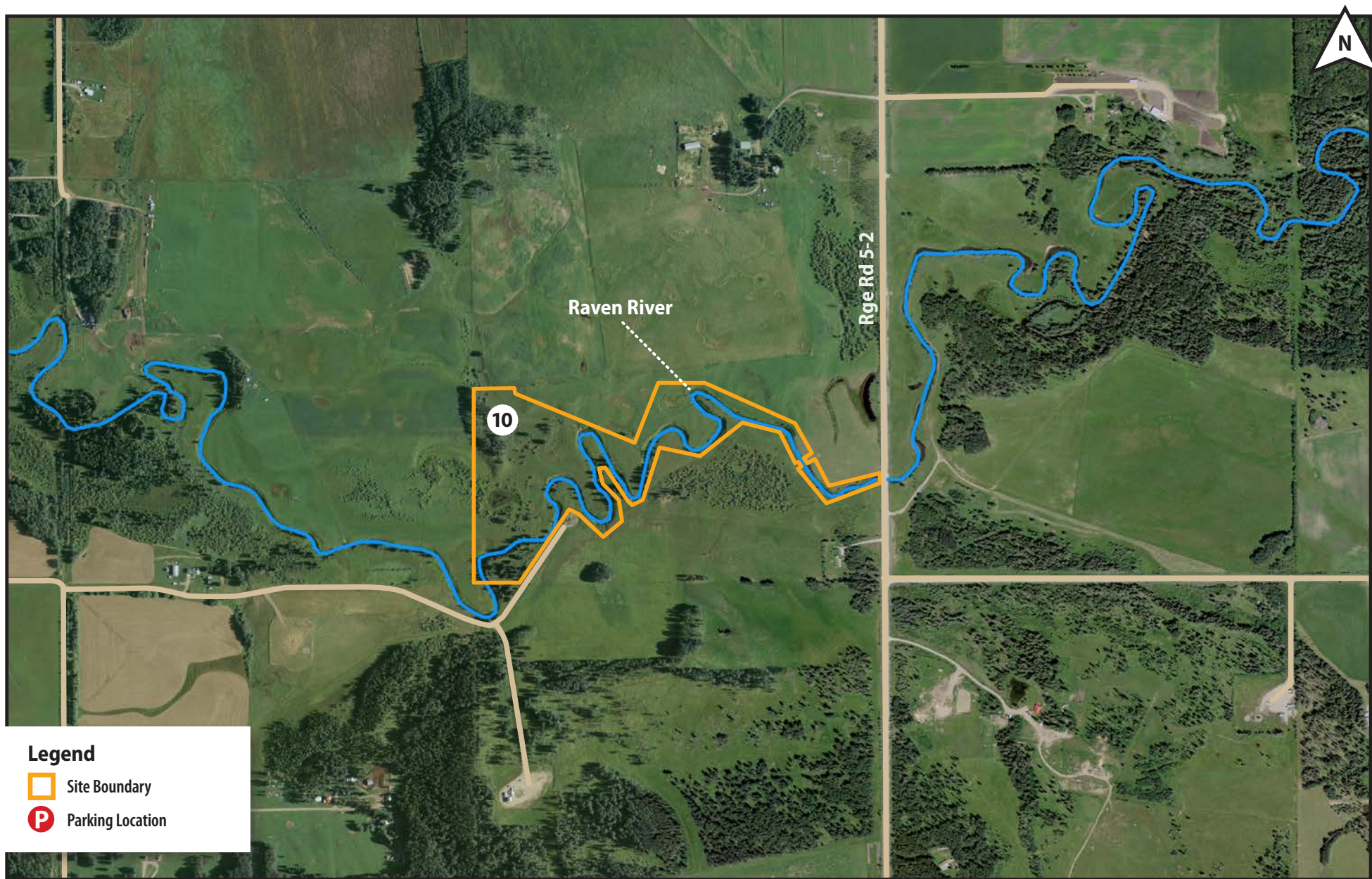


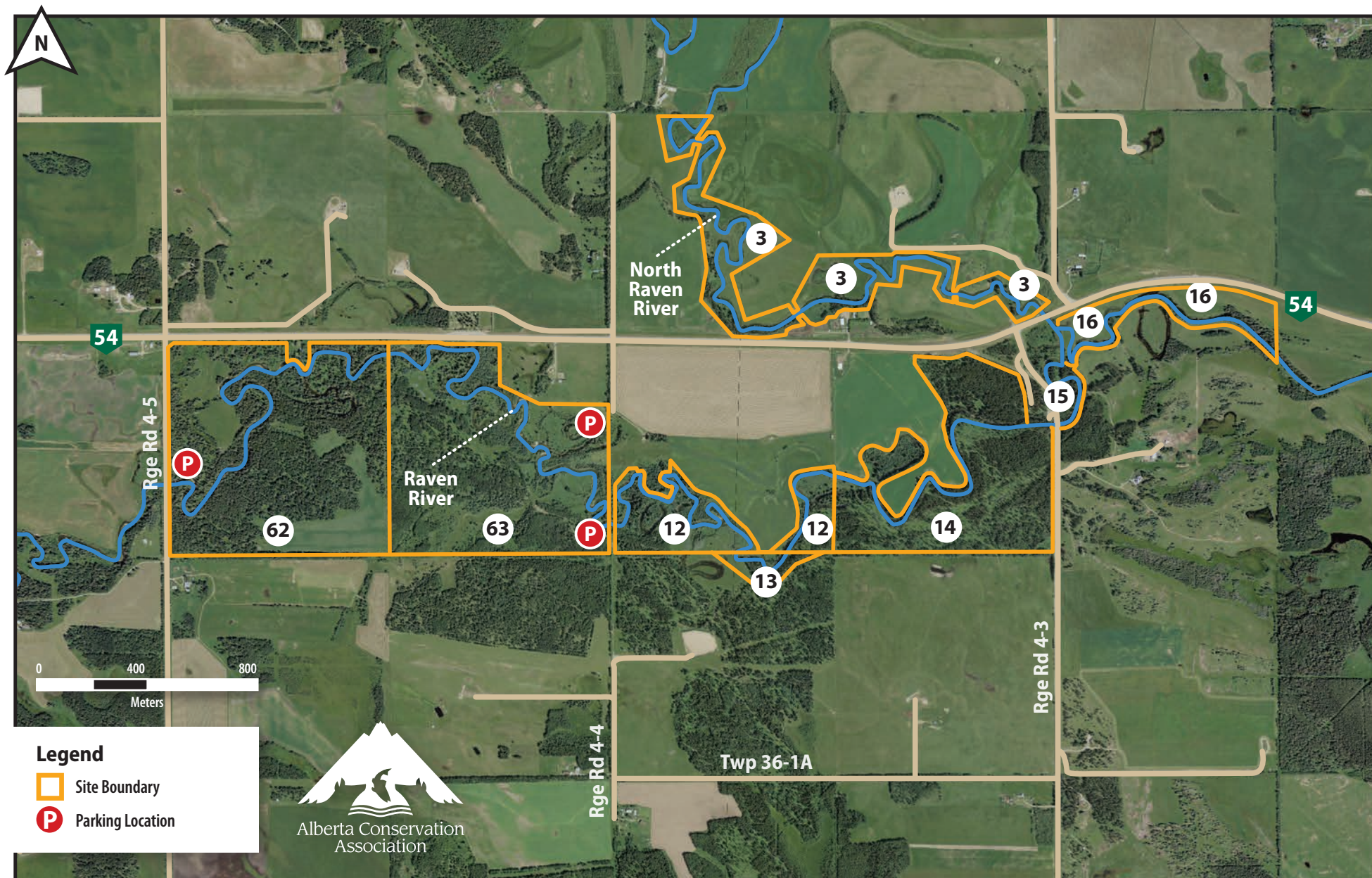


Riparian Corridor Access Conditions

River	Site	Site Name	LLD	Access Conditions
Raven River	7	MacCharles Riparian Site	SW-15-036-06-W5M	No contact required
Raven River	8	Shaw Riparian Site	SW-14-036-06-W5M	403-845-0284
Raven River	9	Follis Riparian Site	NW-12-036-06-W5M	No contact required





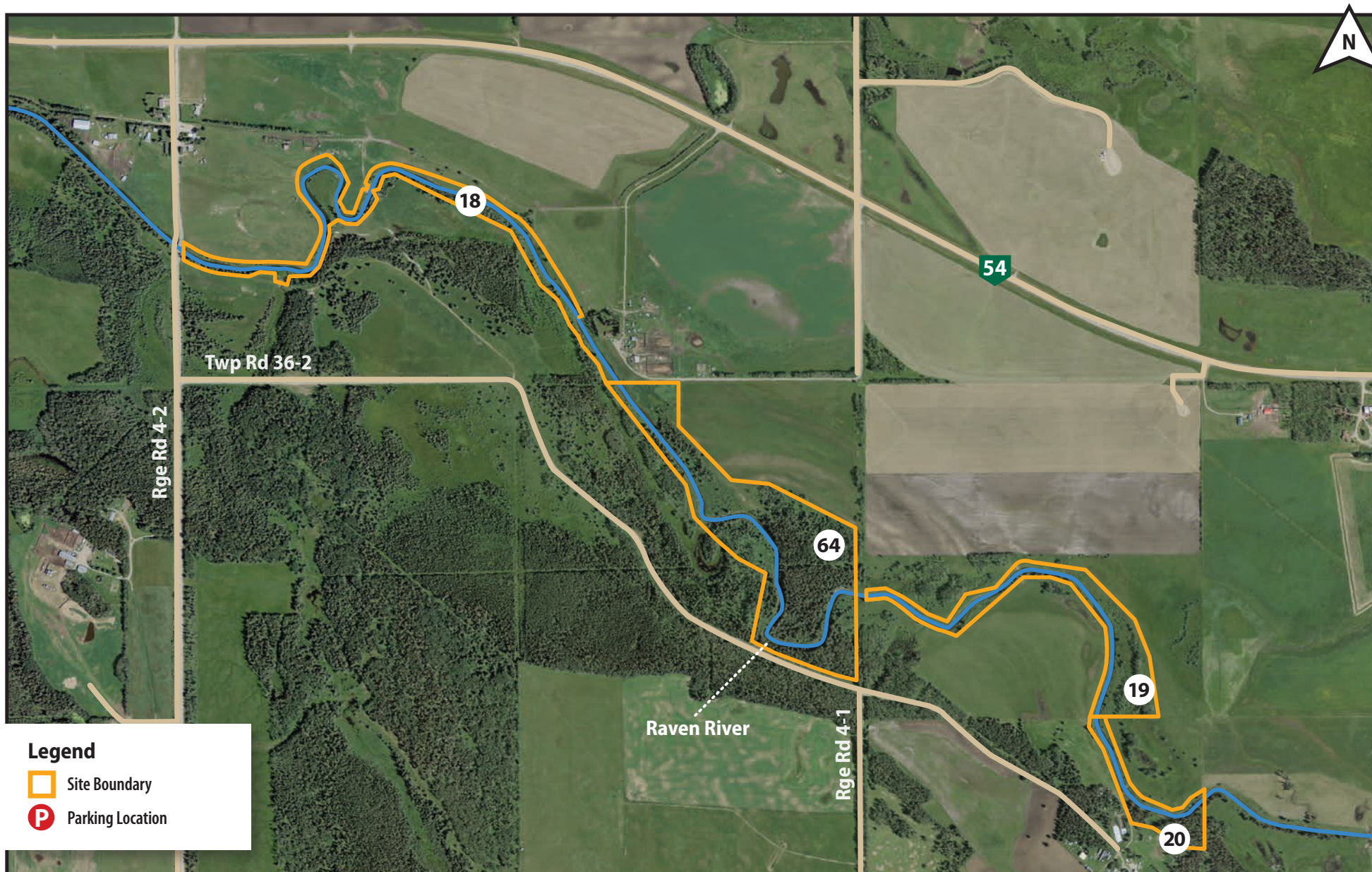


Riparian Corridor Access Conditions

River	Site	Site Name	LLD	Access Conditions
Raven River	62	Porter Conservation Site (E3-170)	SW-17-036-04-W5M	No contact required
Raven River	63	Drake Conservation Site (E3-165)	SE-17-036-04-W5M	No contact required
North Raven River	3	Doll-1 Riparian Site	N-16-036-04-W5M	No contact required
Raven River	12	McArthur Riparian Site	SW-16-036-04-W5M	No contact required

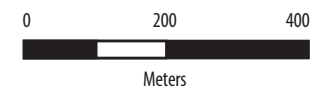
Riparian Corridor Access Conditions

River	Site	Site Name	LLD	Access Conditions
Raven River	13	Bertagnolli Riparian Site	NW-09-036-04-W5M	No contact required
Raven River	14	Doll-2 Riparian Site	SE-16-036-04-W5M	No contact required
Raven River	15	Erickson Riparian Site	SW-15-036-04-W5M	No contact required
Raven River	16	Stannard Riparian Site	NW-15-036-04-W5M	403-505-3298



Riparian Corridor Access Conditions

River	Site	Site Name	LLD	Access Conditions
Raven River	18	Stoyberg Farms Riparian Site	S-14-036-04-W5M	No contact required
Raven River	64	Raven River Conservation Site (E3-89)	NE-11-036-04-W5M	No contact required
Raven River	19	Lamport Riparian Site	NW-12-036-04-W5M	403-226-0345, 403-828-8725
Raven River	20	Butler Riparian Site	SW-12-036-04-W5M	No contact required





Riparian Corridor Access Conditions

River	Site	Site Name	LLD	Access Conditions
Raven River	22	Smith Riparian Site	NE-36-036-04-W5M	403-396-5647, 403-877-0409

